

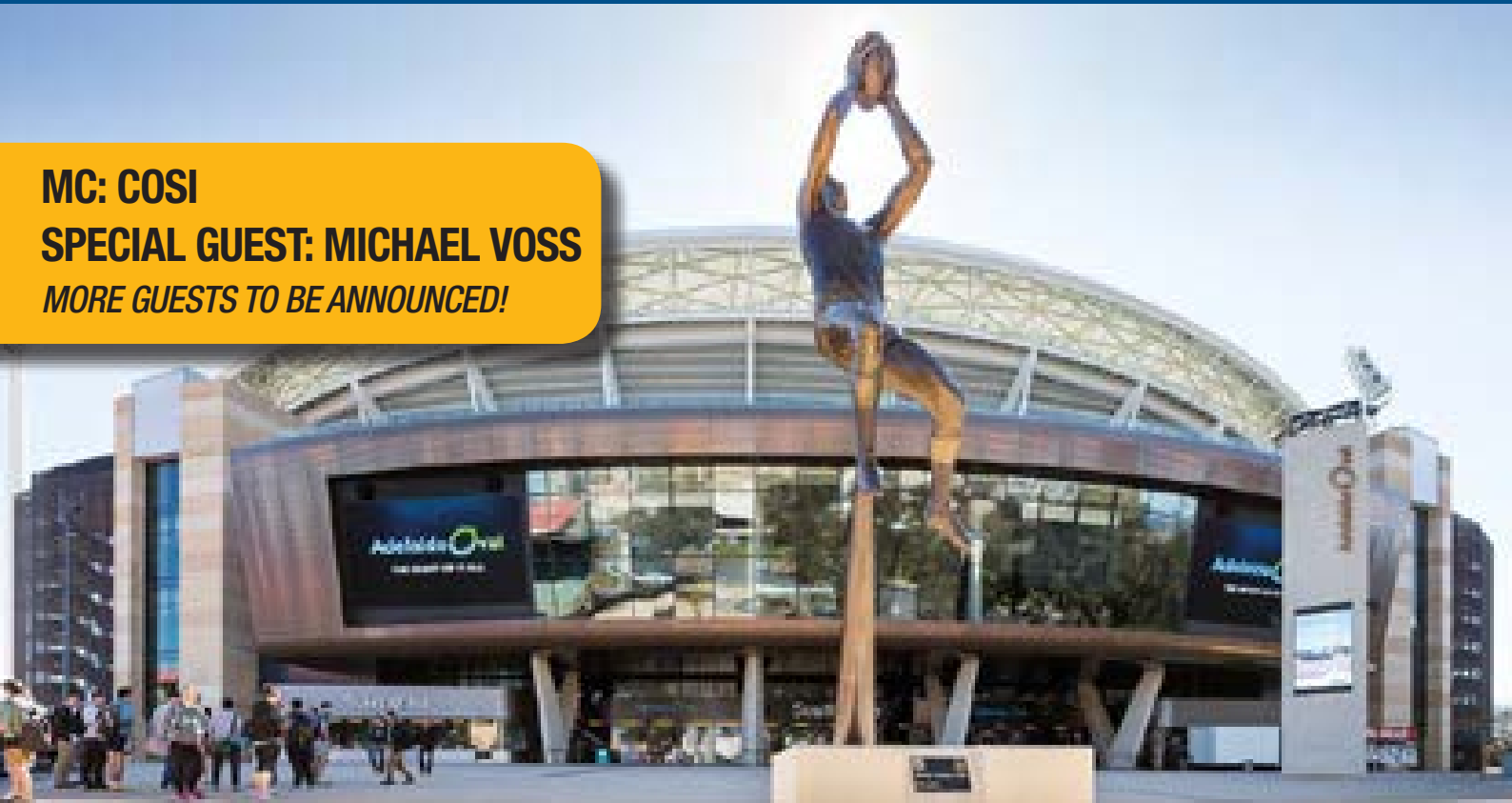


May / June 2016

MC: COSI

SPECIAL GUEST: MICHAEL VOSS

MORE GUESTS TO BE ANNOUNCED!



PRESIDENT'S LUNCH

28TH OCTOBER 2016

ADELAIDE OVAL

WILLIAM MAGAREY ROOM

SAVE THE DATE

Strength • Ethics • Integrity





ADELAIDE PIPELINE MAINTENANCE SERVICES



The industry leader in the provision of water and wastewater maintenance services.

Our state of the art equipment is operated by the most experienced technicians in the country. Our wide range of specialist equipment will enable us to find solutions to all of your sewer, stormwater and hydraulic problems.

Our services include:

- • Water Recycling Combination Jet-Vac & Hydro-Jet Units
- • New IBAK Mainline CCTV Inspection Camera
- • Non Destructive Digging/Hydro-Excavation
- • Service Locating- GPR & Radio-Detection



Contents

May / June 2016

Inside this issue....

MPA Editorial	2
MPA Day at the Footy	6
Technical	8
Modular Bathroom Pods	14
Collapsing Builders	16
Legal Advice	18
MPA Golf Day	20
Northern Territory	22
Financial Advice	25
Nutrition Principles	26
Training	28
New Members	30
Hot Products	32
MPA Event Calendar	35
Industry Supporters	36
Industry & Affiliate Members	37

Cover: MPA President's Lunch



Master Plumbers
SOUTH AUSTRALIA

Published by

Master Plumbers
Association (SA) Inc
1st Floor/1 South Road
Thebarton SA 5031
PO Box 219

Torrensville Plaza SA 5031

Ph: (08) 8292 4000

Fax: (08) 8292 4040

Email: admin@mpasa.com.au

Prepress and Printing

Keystone Printing

Ph: (08) 8231 9999

Fax: (08) 8231 4899

Email: sales@keystoneprinting.com.au

Advertising Enquiries

Frances McCaffer

Ph: (08) 8292 4000

Email: frances.mccaffer@mpasa.com.au

Website

Web: www.mpasa.com.au

Opinions expressed in Plumbing SA are not necessarily those of the MPA-SA, nor does the MPA-SA guarantee the accuracy of the statements made by contributors or advertisers or accept responsibility for statements they may express in this publication, nor does the MPA-SA accept liability to advertisers for the publication of advertising which may be held contrary to the Competition and Consumer Act 2010. MPA-SA reserves the right to refuse, cancel, amend or suspend any advertisement or insert without reason. All advertising pricing is correct at the time of publication but is subject to change without notice. Errors and omissions excepted.

Trades insurance you can have a chat with.

Call WFI on 1300 934 934 or visit wfi.com.au

Good people to know.



Editorial



World Plumbing Day Celebrations

World Plumbing Day is an international event, initiated by the World Plumbing Council, held on 11 March each year to recognise the important role plumbing plays in societal health and amenity.

In Adelaide, the MPA along with key stakeholders; TAFE, GWA Bathrooms, Rehau, the Office of Technical Regulator and with the support of a number of the Old Master Plumbers, planned a Golf Day at North Adelaide on Friday 11th March.

The 13 teams that supported the event were; Rehau, Rheem, GWA Group, MPA, Plastec, APA, Tradelink, TAPS, TAFE, Samios, EML, Iplex and Rinnai.

All of the teams enjoyed a great day of networking with industry colleagues, the challenges of the course and the refreshments provided throughout the day.

The day which was also recognised around the other states and territories proved to be a hugely rewarding day. Even the President of the United States prepared a press release marking this special day. *(See the letter on page 20.)*

Retired Membership Category

I was lucky enough to be invited by Bruce Harris to attend one of the quarterly Old Master Plumbers Luncheons on Friday 1st April at the Tiros Restaurant at Regency Park. I was pleasantly surprised of the passion and interest the past legends of our industry have for the current state of the industry.

The knowledge and experience around the two tables was glaringly obvious and a few of the past legends mentioned that they still want to be part of the action in some manner.

The suggestion that we form some type of Retired Membership Category was raised and this is something I can guarantee to all retired members that we will pursue this idea.

Step one – getting signed off by the Executive Board has been completed, now keep tuned for the remainder of the process. Thank you Bruce and all those who came along to a great lunch.

Pipeline

TECHNOLOGY SERVICES



Servicing Contractors & Consultants

Latest Technology & Equipment in Australia

We Service:

- Water Utilities
- Councils & Local Government
- Property Development Consultants
- Construction & Civil Industry
- Consultant Engineers

- Sewer & Stormwater Asset Management
- Hydrojet & Vacuum Recovery Units
- Confined Space Entry Specialists
- Location of Underground Services (ground penetrating radar)
- CCTV Inspections
- Hydro Excavation (non destructive digging)
- Blocked Stormwater Sewage Drains
- Project Management
- Traffic Management / Survey / Plans

SA Owned & Operated

Pipeline Technology Services was the first of its kind in Australia and still the leaders in the industry for technology and service.

24 Hour Emergency Service

8351 7000
www.pipelines.com.au



Master GTS
Plumbers
SOUTH AUSTRALIA



The Future of our Industry is in Your
Hands

It's Down to You!

Apprentices for Your Business
Traditional Values
Professional Service
Total Commitment

Why You Should Choose a MPA GTS Apprentice

Extensive Support Network

- > Administration
- > Training
- > Mentoring

Selection Process

- > Quality Candidates
- > Quality RTO's
- > Quality Results

> Flexibility

- > Solutions to Meet Your Needs
- > Apprentices from 1 Week to 4 Years



Get the Right Group Training Organisation
Get the Right Apprentice

Your Business and Our Industry will be Better for it



8292 4000

www.mpasa.com.au

Editorial

Electronic COC's

The Office of Technical Regulators (OTR) move to introduce electronic COC's is becoming a reality with testing now well underway with a group of selected plumbers.

Geoff Ball has been instrumental in developing a system that will assist the trade move into the digital age. There is a more detailed explanation of how, what and when the system will be rolled out inside this edition, so take the time to read the information and start preparing for changes that will help with efficiencies of your business and ensure compliance in the industry.



MPA Day at the Footy

MPA held a very successful "Day at the Footy" held on Saturday 2nd April when the Crows took on the Power for this year's first showdown. It was the first of hopefully many future annual events that provides members an opportunity to be part of a networking event with MPA Staff and the Executive Board.

The event was supported by 100 plus participants that met prior to the game with some refreshments. The formal part of the day began with an introduction of all the staff and board members then an interview conducted by MC Paul Harrison with Crows player, Mitch Grigg.

After the first half demolition of the Power by the Crows CEO Andrew Fagan was interviewed by the MC and followed by presenting a number of prizes to the lucky winners. A big thank you to all those that attended and to the Adelaide Crows for all their support in which was rated as a successful day.

Andrew Clarke
Executive Officer



UNITRAY
HOT WATER UNIT
SAFE TRAY SYSTEM



**HOT WATER UNIT
INSTALLATION MADE EASY**

Save time and money!

The Unitray, a new tough polymer safe tray and connection system, let's you install HWUs to code fast and efficiently.

Cost effective:

Use the all in one **UNITRAY** system instead of a copper tray and fittings and save. Assembled in less than 1 min.

Easy to order and install:

Safe tray with tundish and connections all in one kit. No soldering – HDPE fusion welded, threaded and Fernco connection compatible.

Versatile:

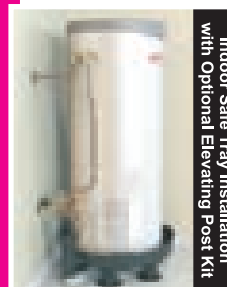
Tray sizes available to suit 25 litre to 315 litre HWUs. Elevating post kit available to meet food tenancy req's or when connecting to an existing outlet located anywhere under the tray.

Safe and compliant:

Complies with and exceeds AS 3500 National Plumbing Code requirements.



Indoor Safe Tray Installation



Indoor Safe Tray Installation with Optional Elevating Post Kit



Outdoor Installation with Post Kit as an Elevating Platform

More information at:

info@unitray.com.au

www.unitray.com.au



Be Impressed with Zetco

Full range 15-50mm

Press x press, press x female, press x male

**Nut & tail, which includes Zetco's
continuous flow water heater kits**

(Aust Pat No 2006 200 845 & Pat Appln No 2013 242 783)



WaterMark

IAPMO WM-000110
AS 5830.1



AGA 5301
AS 4617



Phone 1300 659 639

Email enquiries@zetco.com.au

www.zetco.com.au

MPA Day at the Footy



Our MPA Day at the Footy event was held on Saturday 2nd April 2016 at the Adelaide vs Port Adelaide Showdown. In the Adelaide Oval's picturesque Cathedral Room overlooking St Peters, our 100+ guests enjoyed delicious canapes, along with a selection of beer, wine and soft drink.

Young Adelaide Crows Midfielder Mitch Grigg was interviewed prior to the game, and guests then made their way to the Eastern Stand of Adelaide Oval to enjoy the match. Back in the Cathedral Room at half time, guests enjoyed another fantastic selection of food and drinks, as well as an interview from our guest speaker - Andrew Fagan, CEO of the Adelaide Football Club.

On the day, prizes included 2 signed footballs - one Sherrin football signed by the Adelaide Crows, and one Adelaide Crows branded football signed by the Captain and Coach of 2016. We also gave away 2 bottles of wine and a \$100 JB HiFi voucher. We hope you all enjoyed the day and we thank you for your attendance and support, we would love to make this an annual event.



I'm Christine. This is my business.

I BECAME MY OWN BOSS AT TWENTY-ONE
WITH HELP FROM THE CONSTRUCTION
INDUSTRY TRAINING BOARD.

THE CITB PROVIDES TRAINING ADVICE,
FINANCIAL SUPPORT AND SKILLS
DEVELOPMENT TO HELP BUILD CAREERS
IN THE CONSTRUCTION INDUSTRY.

LEARN HOW THEY CAN HELP YOU TOO.
VISIT CITB.ORG.AU



Office of the Technical Regulator

Backflow prevention requirements for toilet seat douche outlets and flexible hoses

Plumbing Advisory Note

Issued December 2015

The Office of the Technical Regulator (OTR) has identified a number of issues with toilet seat douche and flexible hose installations that do not comply with relevant plumbing standards.

The OTR has determined the cross-connection hazard rating as 'high hazard' for:

- toilet seat douches or bidets that are either integrated into or installed in conjunction with a toilet seat
- flexible hoses installed adjacent to a toilet.

Where a 'high hazard' reduced pressure zone (RPZ) backflow prevention device is required, it must be installed upstream of the toilet douche seat or flexible hose connection.

The RPZ must be fitted before connecting the property's water service to the water meter.

Toilet seat douches

A toilet seat douche or bidet must comply with AS/NZS 3500 Part 1 Water Services Clause 12.2.3.

A douche outlet installed at least 25mm above the overflow level of the pan, at any position, does not require a backflow prevention device.

If the douche outlet is less than 25mm above the overflow level of the pan, at any position, a 'high hazard' backflow prevention device must be installed (see figures 1 and 2). The device must comply with AS/NZS 2845.1 or AS 2845.2.

Legislative requirements

The National Construction Code Series Volume Three, Plumbing Code of Australia (PCA), Part B specifies performance requirements related to installing water services.

AS/NZS 3500.1.2015, Part 1 Water Services, Clause 4.2.2 states 'no device or system that may cause contamination of a water supply shall be connected directly or indirectly to any part of a water service without appropriate cross-connection or backflow prevention control suitable for the degree of hazard'.

Completed plumbing installations that comply with AS/NZS 3500.1.2015 are deemed to satisfy the performance requirements of the PCA in relation to water services.

Technical Cont...



Figure 1: Example of 20mm reduced pressure zone (RPZ) device valve assemblies installed upstream of a flexi-spray outlet in a domestic setting.

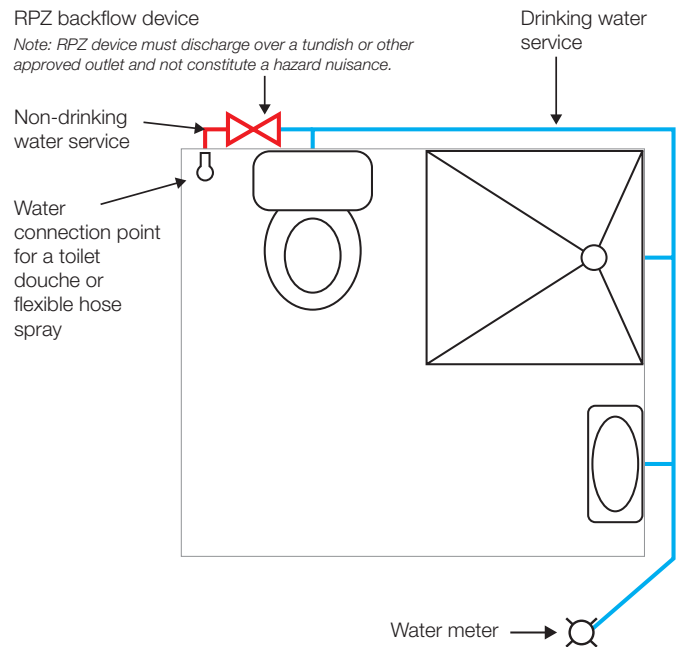


Figure 2: Example of an individual backflow prevention device fitted upstream of a water connection point servicing a toilet seat bidet/douche or a flexible hose adjacent to a toilet.



Figure 3: Example of a toilet seat douche outlet below the rim of the pan



Figure 4: Example of a water connection point installed in a toilet room adjacent to a toilet.

Flexible hoses adjacent to toilets

Where a water connection point is installed adjacent to a toilet for the purpose of supplying water to a flexible hose, a 'high hazard' RPZ backflow device must be installed upstream of the hose connection (see figures 1 and 2). The device must comply with AS/NZS 2845.1 or AS 2845.2.

Testing and commissioning backflow prevention devices

All new installations of backflow prevention devices must be tested and commissioned by a licensed plumber. Results must be recorded in the OTR's official 'Commission, inspection and maintenance' report.

All testable backflow prevention devices must also be tested annually by a licensed plumber and the results recorded in the OTR's official 'Commission, inspection and maintenance' report.

Reports must be completed and forwarded to the OTR within seven days of testing.

Completed reports can be emailed to otr.plumbbackflow@sa.gov.au or posted to:

Office of the Technical Regulator – Plumbing
GPO Box 320
Adelaide SA 5001

Bidettes

A bidette is a sanitary fixture equipped with a douche, but with over rim type water outlet that provides an airgap. Bidettes can be installed as an alternative to toilet seat douches and flexible hoses. The water outlet of all bidettes is at least 25mm above the overflow level of the fixture and does not require testable backflow devices to be fitted to the water supply to the fixture (please refer to Figure 5).



Figure 5: Example of a bidet with an outlet more than 25mm above the rim of the fixture.



Above: Greg Lyng (MPA), Rob Knowles (OTR), Deane Priest (Mac and Cas), Leigh Iry (Metricon Homes)

Working closely with Robert Beard from the OTR and Rob Knowles from SA Water, Deane, Jason & Adam from Mac & Cas - Plumb & Gas of Lonsdale assisted in finding a defined solution to the safe installation of hand held douche sprays. This photo from a Metricon Homes building site at St. Clair shows the installation of the RPZD's that service the hand held douche sprays on the property.



BE YOURSELF

GET THE PROFESSIONAL ADVANTAGE.

4 steps on how to get a career in plumbing

If plumbing is the career for you, study at TAFE SA and get the skills and knowledge to start your own business, or to develop career pathways and opportunities in the plumbing industry.

1. GET HANDS-ON EXPERIENCE

Plumbing courses allow you to get the theoretical knowledge with practical application.

2. COURSE PATHWAYS

We offer school based apprenticeships, short courses, and Certificate II through to Certificate IV.

3. CHOICE OF CAREERS

Your qualification can take you anywhere in the world. Career opportunities include operating your own business, compliance officers, hydraulic consultants, site supervisor, or even a TAFE SA lecturer.

4. FOR MORE INFORMATION

Speak to one of our course advisors at:
Tonsley Campus T: 8207 2800
Elizabeth Campus T: 8207 9700
Noarlunga Campus T: 8207 3953
E: plumbingservices@tafesa.edu.au

tafesa.edu.au/plumbing

tafesa



Government of
South Australia

Technical Cont...

Don't Be Caught Out!



As from 1 July 2016, the Office of the Technical Regulator (OTR) will be transitioning from the current gas and plumbing paper-based Certificates of Compliance (CoCs) to an automated electronic portal and form called the eCoC system. Licensed contractors, registered workers and gas fitters will be able to complete CoC forms electronically and send them to the OTR and other recipients, such as customers and industry entities.

Registering for eCoC system

To use the eCoC system, contractors and workers will first need to register their details on the system (see image opposite), this will include a CBS registration/license number and expiry date, home/business address and contact details including an email address. Once those details have been verified, access will be provided to the system by only using username and password previously registered.

How does the eCoC system work?

The eCoC system is a complete electronic system for drafting, completing, submitting, storing and retrieving eCoCs. The eCoC system stores a full history of all eCoCs submitted so they can be retrieved at any time. The OTR will automatically receive access to all transactions for regulating compliance and safety purposes.

The first step in creating a new eCoC is to enter the customer and property address details into the system and save as a draft; this will produce an eCoC reference number. When the plumbing or gas installation is completed and the all job details have been recorded against that eCoC reference number, the contractor can with a click of a button submit the eCoC to customer and other stakeholders via an email.

If a customer does not have access to an email address, a copy of the eCoC form will need to be printed. The eCoC system will allow the licensed contractor to delegate permission for a registered worker/s to complete and submit an eCoC to a customer.

In both of the above cases, the worker details that performed the work and the contractor details will be automatically shown on the submitted eCoC form, no signature required. The contractor by using the eCoC system will be able to manage their drafted and submitted eCoCs at any time using a mobile device like a smart phone, tablet or computer.

Phasing Out

Once eCoc goes live in July 2016, paper forms will be phased out over an 18 month period as people learn to use the new system.

Training

Once eCoc is live contractors and workers will be able to learn how to use the new system by:

- Attending training sessions
- Using online tutorials via eCoc
- Reading the quick reference used guide.

Books

A reminder that MPA sell gas and water Certificate of Compliance books and also the Internal Sanitary Drain as Constructed Forms.

Contact MPA at 8292 4000 or admin@mpasa.com.au to order.

Want to know more?

To keep up-to-date on the progress of the eCoC transition and also for more information, visit www.sa.gov.au/otr and navigate to the 'Electronic certificates of compliance' page.



Levy Rate Reduced to

2.15%

From July/August 2016 return period

You will soon see an automatic reduction from 2.25% to 2.15% in your levy rate.

This is thanks to our sound financial position and our organisation's ongoing commitment to delivering portable long service leave in a cost effective way.



For more information, visit www.cbserve.com.au

COUNTDOWN TO THE 11th
**World Plumbing Conference, Cape Town,
15 & 16 SEPTEMBER 2016 HAS BEGUN**

14TH SEPTEMBER - WPC TRI ENNIAL MEETING

Regulations for sustainable plumbing – a case for international standards is the theme and based on the major influence water has on each of the four pillars;

Energy/environment/sanitation/water.

This conference will seek OUTCOMES to a variety of issues affecting our world and particularly developing countries.

Some of the planned outcomes, but not confined to, are;

- Research
- Water Efficiency Labelling systems
- Water recycling policy
- Are our regulations and standards in keeping with the needs of supplying basic human rights like water and sanitation? Where to now?
- We are doing well – but well enough? What do we need to do to do better?
- Plumbers to claim back their industry.
- Is plumbing contributing or seizing growth opportunities

World renowned keynote speakers will set the tone and the delegates will debate and seek outcomes to challenge industry and government;

- Prof Mike Muller – conference chairman, SA
- Dr Doulaye Kone - senior programme manager, Bill & Melinda Gates Foundation, USA
- Mr. Shayne Le Combre – Plumbing Industry Action Centre, Australia
- Mr. Dave Viola – COO and senior VP of IAPMO, USA
- Mr. Dhesigen Naidoo - CEO Water Research Commission, SA
- Dr Sadvir Bissoon – Executive (Standards Division), South African Bureau of Standards (SABS)

Other speakers/ session chairs

- John Joseph - India
- Erwin Riesch – Germany
- Domenico DiGregoria – USA
- Prof Lynn Jack - UK
- Alberto J. Fossa - Brazil
- Ian Isaacs and Clyde Koen – SA
- Frans Alferink -UK
- Jonathan Cooper - UK
- Sun Kim - USA
- Julian Rodkin and Aden Veldsman - SA
- Deon Pohorille - SA
- John Telford - SA
- Frederick C Schilling - USA
- Evert Swanepoel - SA
- George N Thompson - UK

Gala dinner guest speaker: Lewis Pugh, Ocean advocate

PROUD CONFERENCE SPONSORS:



SIMULATION SPONSORS:



PRIZE SPONSORS:



Discounted rates apply until 31st March 2016.

Exciting pre and post tours available as well as day tours for partners

For the full programme visit
www.wpc2016.co.za

WPC_2016 WPC2016 WPC-2016 WPC app: APPPLUMBER, available on:



GO TO www.wpc2016.co.za or
www.worldplumbing.org
for registration form and details of this exciting and
essential event

Modular Bathroom Pods



CIMC Modular Building Systems (Australia) Pty Ltd is a division of CIMC Group, a global company that turns over \$10bn USD annually.

The modular business manufactures hotel rooms, residential apartments, student accommodation and aged care facilities in a controlled manufacturing environment in China and has now supplied over 25,000 rooms worldwide

primarily to Australia and the UK for clients such as Hilton, IHG, Marriott, Rio Tinto, BHP and many others.

Most recently, CIMC MBS has identified a growth in the requirement for off-site manufactured bathroom pods to provide cost benefits to projects through reduced on-site programs within the same sectors as their modular building systems.

Bathroom pods are most suitable in projects built at height where the cost of wet areas increases at higher levels due to lost productivity in labour and increased cost to get materials to the higher levels of the building.



Typically offsite manufacture becomes more efficient with repetitious designs and provides significant savings to the project if a small number of bathroom pod types or layouts can be utilised. CIMC MBS manufactures off shore and many have negative ideas about the lack of Australian content of these modular and pod products. However it is a requirement that local consultants are engaged throughout the design and certification of any offshore manufactured product and is no different from conventional construction in this aspect.

All materials sourced are as specified by the client and most often through Australian suppliers, many of which manufacture in China which enables CIMC MBS to make additional savings to the project by eliminating the requirement for transportation of these materials to Australia. Instead procured through the Australian supplier with delivery direct to our manufacturing facility for installation in the module or pod.



Feedback from the plumbing industry in Australia in relation to bathroom pods when involved in the project delivery has been positive. Contractors are able to focus on the major MEP (Mechanical, Electrical and Plumbing) scope of works within the building such as head works, plant and all of the works associated to run the services horizontally and vertically rather than the more detailed work which uses more resources with a lower margin and contractors are instead able to spread their work force across more projects concurrently to focus on the higher margin works.

It is a requirement that Australian subcontractors oversee and certify the Mechanical, Electrical and Hydraulic works within the module or pod with the testing and compliance certificates provided to the client for overall compliance certification of the building.

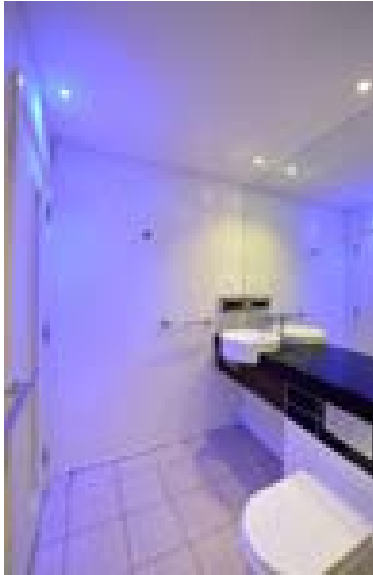
CIMC MBS encourages clients and building consultants to be engaged and involved throughout the prototype and manufacturing process of our projects.

All products used are certified to Australian Standards and WaterMarked with standard warranties provided by suppliers for fixtures and fittings within the pod and a 12 month defect liability period on workmanship.

Due to the manufacturing process, all bathroom pods are prototyped for client inspection and sign off prior to mass manufacture which gives clients the opportunity to see, touch and feel the finished product and the ability to make design and material selection changes prior to mass manufacture.

Modular Bathroom Pods

This prototype once signed off by the clients, consultants and any other parties required is then used as a benchmark for quality throughout the manufacturing process.



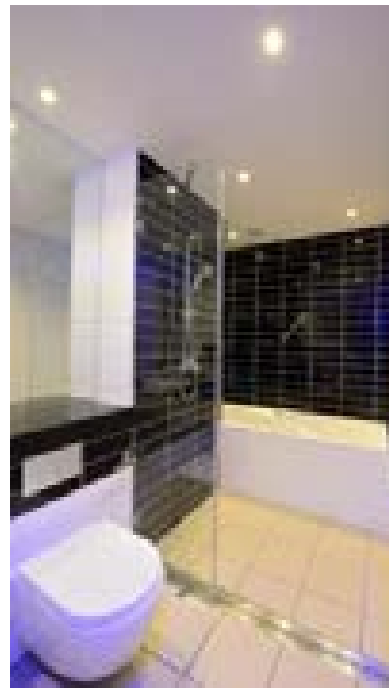
The installation onsite for the bathroom pods is very simple with removable lifting points and a hydraulic wheel system to crane onto a landing platform and skated into final location for connection to main services.

This method of offsite construction provides significant savings to the overall program of the project construction and the ability to further improve quality assurance and identify defects or changes required prior to arrival on site therefore also reducing the handover period.

CIMC Modular Building Systems is working on a number of new projects with our new bathroom pod product and continues to build on a healthy pipeline of work with

the Modular Building System. CIMC MBS aims to be a significant contributor to the Australian market for off-site manufactured building products both full volumetric construction and bathroom pods.

**For more information visit: www.cimc-mbs.com
or Ph: 08 6214 3813**



POSITIONS VACANT



PIPE LAYERS

We are currently seeking applications for experienced pipelayers for sub-division work in Metro Adelaide.

- Experienced in installation of Sewer - Water Main - essential.
- Must have all round experience in Civil Construction work on sub-divisions.

The positions are site based and are offered as Permanent Full-time (fixed term) employment. Overtime available.

Mandatory completion of a pre-employment medical (including drug & alcohol testing) and site specific inductions will be required.

Reporting to our experienced Site Manager & Supervisors.

Candidates must have:

- A current industry safety card eg: White Card
- Be prepared to undertake a pre-employment medical exam, including D&A testing
- Able to provide at least two contactable referees
- Possess a good work ethic and attitude - with a focus on safe working practices
- Demonstrated ability to work in a team environment

**Ref no. EO224 addressed to the HR Manager - Field
(m) 0402 795 538, (p) 08 8347 1888, (e) hr@catcon.com.au**

*Other positions available: Excavator Operator Ref no: EO223
Backhoe Operator Ref no: EO212*

Collapsing Builders

Do you, do your due diligence!!



The recent belly-up of builders such as Endeavour Quality Homes, and the much recently publicised Tagara Builders, again reinforces the need for small and medium size businesses to have a sound pre-contractual risk management guide in place.

Securing a new client is the ultimate aim of any business.

However, given the current volatility of the construction industry it is also paramount to ensure that the credit worthiness of your potential new client is assessed in advance.

Highlighted below is a due diligence checklist which you may adopt, and customize according to your business needs.

What can you do?

Public Record Review

- Conduct the relevant searches on your potential client on government databases available to public. Namely, ASIC¹, Personal Property Securities Register (“PPSR”), Land Title Search (“LTO”) etc.
- The information obtained may give you an insight into the potential client’s current financial credibility.

Terms of Trade

- Always ensure you have comprehensive terms of trade that you issue to new clients with every quotation and tender. It is important that your terms of trade are properly documented, that they properly protect your business legally and that they are legally binding between your business and your new client

Jarvis Toyota



For the absolute best fleet price on your next Toyota...

call your MPA representative Gary Waters on **8400 9106** or **0417 893 321**. Plus, as a MPA member, receive a **FREE \$500 Fuel Card** with every vehicle purchased.



jarvistoyota.com.au



Oh what a feeling!

www.mpasa.com.au

Collapsing Builders

Do you, do your due diligence!!

- At times, contractual relationships are established merely through discussions or a gentleman's handshake. This is not a bulletproof arrangement. Parties can avoid any likely dispute in the future simply by setting out a clear and concise written terms of trade from the start before work is commenced
- Your terms of trade with your potential client must cover key clauses such as clear payment terms, limitation of liability, indemnity, guarantee, variations, ownership of goods etc
- There is no one size fit all standard terms of trade. For complex transactions it is advisable for you to consult a lawyer to draw up a comprehensive agreement to safeguard your interest and prevent bad debts. A small investment in legal advice to ensure you get your terms of trade and contracts right so as to prevent a potential greater business loss is a wise investment for all businesses.

Conduct Credit Check

- Conduct a credit check on your potential new client. For a small fee, you can contact a credit bureau to carry out a creditworthiness check on an individual or business
- This vital information will assist you in making a more informed business decision with a particular individual or business, particularly if they have a negative credit report in relation to payment of debts to third parties.

Reputational Review

- Leverage the wealth of information available online to gather more data about your potential client
- Also, consider making a request for details of past customers of your potential client. If they are provided consider touching base via telephone calls or a personal visit with those past customers identified/provided, and ask them about their experience in dealing with your potential client and whether there were any issues in relation to being paid what was claimed on time
- If possible, seek verification from third-parties such as state licensing bodies, suppliers, etc.
- This check will give you an insight into your potential client's background and reputation.

Invoicing

- Have a disciplined invoicing process in place. And of course, invoice as early and as often as possible
- If your potential client is a builder, consider incorporating the following phrase in your invoice "This is a payment claim made under the Building and Construction Industry Security of Payment Act" pursuant to the Building and Construction Industry Security of Payment Act 2009 (SA)²
- The intention of the Act and the phrase is to ensure a party is paid for the work that they do in a timely manner. There are strict time frame requirements in which things must be done when an invoice you issue has the above wording on it. If those things are not done within the required timeframe it allows you to take certain steps to recover amounts owed to you under the Building and Construction Industry Security of Payment Act 2009 (SA)³Insurance
- To further mitigate your business risk you may consider investing in Debtors or Trade Credit insurance. This insurance protects your cash-flow by covering your losses if a debtor defaults on payment or becomes insolvent, giving you the peace of mind to focus on running your business
- You may wish to speak to an insurance agent/broker to obtain comprehensive information on the same.

What's next?

This is a general guide only. You may wish to seek professional advice from your accountant, financial advisor or a lawyer to tailor make a guide that suits your business and clientele.

A thorough due diligence and risk management system is a fundamental tool to assist in the running of a successful business.

Such a system assists to safeguard profitability and minimise risk to your business.

Always do your homework before signing the dotted line with a potential client.

For more information please contact Thina Mariappan on 8292 4000.

¹ Australian Securities & Investment Commission

² There are various exemption to the SA Act.

³ There are various exemption to the SA Act.

Legal Advice

Unfair Dismissals - Drawing the line at undesirable behaviour



Under the Fair Work Act 2009 (the Act), a person is deemed to have been unfairly dismissed when the dismissal was harsh, unjust or unreasonable and is not a case of genuine redundancy. It is difficult to distinguish what exactly constitutes a dismissal that is harsh, unjust or unreasonable.

In considering whether a dismissal meets these criteria, the Fair Work Commission (FWC) must take into account a number of factors, including whether there is a valid reason for dismissal and whether the employee was notified of that reason as well as warnings about any previous unsatisfactory conduct. These considerations place significant weight on the actions of the employer before and during the dismissal. Where a dismissal is determined as harsh, unjust or unreasonable, it may be seen as allowing certain inappropriate behaviour that caused the dismissal and often it is an indictment on the behaviour of the employer.

Recently, a worker who made inappropriate comments about Islam and the Taliban to an Afghan colleague was deemed to have been unfairly dismissed, while in another case an employee was found to have been fairly dismissed after directing foul language at a colleague. Although these two incidents initially seem somewhat similar, it is the context of the dismissal that sets the two apart.

Johnpulle v Toll Holdings Ltd T/A Toll Transport [2016] FWC 1507. Mr Johnpulle was dismissed after having made unsuitable comments to an Afghan colleague regarding Islam and the Taliban. These comments were a clear breach of Toll's Code of Practice, which Mr Johnpulle knew about. This conduct was deemed a valid reason for dismissal. However, the context of the dismissal itself attracted attention from Commissioner Bissett.

The Commissioner found it harsh, unjust or unreasonable to dismiss Mr Johnpulle when no formal disciplinary action had been taken to address his inappropriate actions on previous occasions. It was stated that, by its actions, Toll had not indicated that such behaviour would not be tolerated. The Commissioner clarified this position in stating: "Whilst I do not say that Toll condone[d] the behaviour of [the transport dock hand] I consider that the decision to dismiss is severe given the absence of any earlier sanctions."

Horner v Kailis Bros Pty Ltd [2016] FWC 145 Mr Horner was dismissed after directing foul language toward his co-workers. Mr Horner had become abusive after he injured his lower back while lifting cartons in a manner he had earlier reported was unsafe.

While it was established at trial that there was a culture of swearing in the workplace, the difference between swearing during conversation and swearing at another person was an important distinguishing feature. The Deputy President placed significant weight on the fact that Mr Horner had already received a formal warning for swearing at a colleague on a previous occasion.

This, combined with his aggressive use of foul language, was found to be enough to constitute a just and reasonable dismissal. Lessons learnt. It is important to note that in unfair dismissal cases, the behaviour of the employer is just as relevant as the indiscretions of the employee. These two incidents, while similar in nature can be distinguished by the differing decisions of the employer to penalise previous undesirable behaviour.

As a result of its willingness to flag problematic behaviour with its employees, before it became a dismissible offence, Kailis Bros Pty Ltd was able to protect themselves against the unfair dismissal claim. In contrast, Toll Transport's reluctance to flag such behaviour was seen to create an environment whereby dismissal was seen as severe and therefore unfair.

Luke Holland, the author of this article, is a partner at Sparke Helmore Lawyers. We would like to acknowledge the contribution of Josh Stewart to this article.

Luke Holland
Partner

Sparke Helmore Lawyers
T > 08 8415 9875
E > luke.holland@sparke.com.au



50 YEAR MEMBERS

A J Paternoster & Son Pty Ltd	F S Scott & Co Pty Ltd
A S Carlson & Sons Pty Ltd	Hall & Baum
Baldwin's Plumbing & Gas	J H Hebbard Pty Ltd
B E & P E Jones Pty Ltd	N D Birchmore Pty Ltd
Bruce Harris Project Management Pty Ltd	R & A Morgan Plumbers
Dineen Plumbing	Robert Farnham
E J Northway & Son Pty Ltd	Warren Plumbing Services
Fisher Plumbing	W.F. Gray & Co

LIFE MEMBERS

D. J. HEBBARD	R. R. FARNHAM
J. H. HEBBARD	S. B. HALL
J. HOLDER	T. DRIVER

\$50 SAYS

WE WON'T LET YOU DOWN!

- ✓ 500+ EVERYDAY ESSENTIALS IN STOCK, ALWAYS
- ✓ ORDERS READY FOR PICK UP IN 30 MINS OR DELIVERED WITHIN 2 HRS
- ✓ WE WON'T BE BEATEN ON PRICE ON OUR 500+ EVERYDAY ESSENTIALS
- ✓ SAME DAY TURNAROUND ON EVERYDAY QUOTES
- ✓ QUALITY PRODUCTS BACKED BY MANUFACTURER WARRANTIES
- ✓ WE KNOW OUR STUFF AND UNDERSTAND YOUR BUSINESS

Trade customers only. T&Cs apply.
See in branch or tradelink.com.au/promises for details.

Tradelink 

®

MPA Golf Day

In celebration of international World Plumbing Day on Friday March 11th 2016, MPA SA held a Golf Day at the North Adelaide Golf Course. The day included breakfast, golf, lunch and prizes throughout the day. We thank the World Plumbing Day committee for their hard work on this event:

- Barry Bell – *Old Masters*
- Andrew Clarke – *MPA*
- Robin Gatti – *GWA Bathrooms & Kitchens*
- Michael Hadaj – *TAFE*
- Robert Knowles – *Office of Technical Regulator*
- Nick Lucivero – *Rehau*
- Stephen Van Borg - *TAFE*



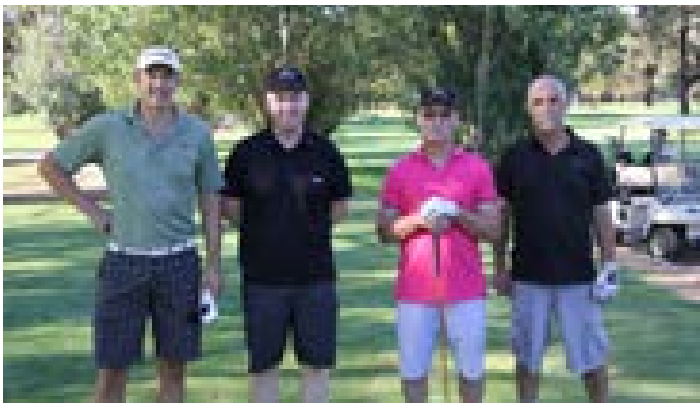
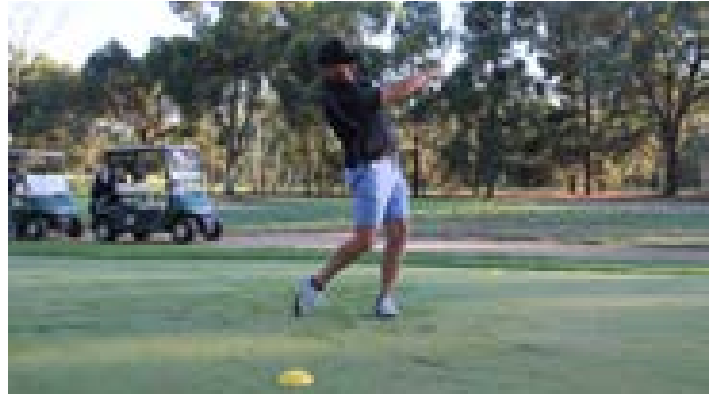
THE WORLD PLUMBING DAY
COMMITTEE

March 10, 2016

I send greetings to all those observing World Plumbing Day.

No matter who we are or where we come from—whether it's from the world's highest peaks or its lowest valleys—we all have responsibilities to one another and to the one planet we share. When hundreds of millions of people from around the globe are denied access to clean water or proper sanitation, their suffering not only tears away at our common humanity, but also at the brighter future we hope to secure for our children and grandchildren.

By developing creative and innovative methods to access safe, clean, and reliable water sources and environments, plumbers and other trained professionals are helping shape a healthier, more sustainable reality—one where a person's circumstances do not limit their ability to make of their life what they will. This World Plumbing Day, let us recommit to building a world where people from all walks of life are afforded the basic rights they deserve as human beings.



FLEET
BETTER BUSINESS SENSE



TOYOTA

Known in the trade as a big deal

Save thousands on tool of trade vehicles

As a paying Master Plumbers Australia member, you can access Gold Fleet Discounts across the Toyota range*. From the hardworking HiLux SR5 and HiAce LWB, to the New Fortuner or Corolla Hatch, there's a vehicle to suit every need. And when you stand to save thousands, this is one deal you won't want to miss.

To find your local Fleet Specialist Dealer, call 1800 444 847.



Master Plumbers Australia membership details required to redeem Gold Fleet Discounts.

*Excluding Special Edition models.



TPM1895 MPA 05/16



toyota.com.au/fleet


Oh what a feeling!



Use of saw blades on angle grinders

The purpose of this Safety Alert is to highlight the dangers of fitting saw-type blades to hand-held angle grinders.

Background

A worker recently received a serious injury to his hand after using a milling blade fitted to a 4" grinder to tidy up an aluminium work piece. A saw-type blade was specifically highlighted by the manufacturer of the grinder as an attachment not suitable for the tool.

Businesses need to ensure after-market attachments fitted to plant meet design specifications authorised by the manufacturer. The use of saw blades (also known as screamer or milling blades) on angle grinders is particularly dangerous due to risk of kick-back.

The following factors and actions need to be considered to ensure hazards are identified and mitigated.



Contributing factors

The most common causes of injury to operators and nearby workers from angle grinders are lacerations from attachments that break and become projectiles, and lacerations from angle grinder kickbacks.

Action required

- Make sure all attachments are recommended by the manufacturer, and attachment selection is appropriate.
- Ensure the right tool is chosen for the job – a grinder is not always the safest option.
- Ensure operators have sufficient instruction, training and supervision to undertake the task safely.
- Wear appropriate personal protective equipment (PPE).
- Identification and risk management of potential hazards.

Further information

Legislation

- Section 21, *Work Health and Safety (National Uniform Legislation) Act*
- Part 3.1, *Work Health and Safety (National Uniform Legislation) Regulations*.
- Regulation 206, *Work Health and Safety (National Uniform Legislation) Regulations*.

Northern Territory

Guidance publications

- [Guidance Note – Safe use of angle grinders, WorkSafe Victoria¹](#)
- [Managing the Risk of Plant in Workplaces, Code of Practice²](#)

Contact details

NT WorkSafe: 1800 019 115

Email us at ntworksafe@nt.gov.au

For more information on work health and safety, go to NT WorkSafe's website at www.worksafe.nt.gov.au

Disclaimer

This Safety Alert contains safety information following inquiries made by NT WorkSafe about an incident or unsafe practice. The information contained in this Alert does not necessarily include the outcome of NT WorkSafe's action with respect to an incident. NT WorkSafe does not warrant the information in this Alert is complete or up-to-date and does not accept any liability for the information in this report or as to its use.

NORTHERN TERRITORY MEMBERS

FULL MEMBERS

Aldirect Plumbing and Gasfitting Pty Ltd
Ausplumb NT
Centre Plumbing
Commons Plumbing (NT) Pty Ltd
G.J Wigg Plumbing Specialists Pty Ltd
Gold Medal (NT) Pty Ltd
Greg Harwood Plumbing and Gasfitting Pty Ltd
Mousellis and Sons Pty Ltd
Overland Plumbing
Peter Rintel
Selter Shaw Plumbing Pty Ltd
Stockwell Water & Gas Pty Ltd
Symonite Pty Ltd t/a Tap and Drain Doctor

INDUSTRY MEMBERS

Architectural Water Solutions
Galvins Plumbing Supplies
KSB Australia
Rhino Industrial Pty Ltd
Solahart NT
Territory Plumbing Supplies Pty Ltd
Think Water – Winnellie & Virginia
Tradelink



NOW IN THE NORTHERN TERRITORY

Quality endorsed apprentices on tap.

TAPS is committed to providing quality endorsed apprentices to the plumbing, roofing and gas fitting industries through superior training methods and employer support services.

We guarantee it!

- > We select the best candidates
- > Not for profit organisation
- > Minimal paperwork
- > Flexibility
- > Ongoing support
- > Additional training
- > Hassle free process
- > 18 years of providing apprentices to the industry
- > Dedicated to exceeding industry safety standards
- > Apprentice placements short or long term



 (08) 8433 1200 / 0400 299 085

2016 PLUMBING & GAS ROADSHOW

Master Plumbers Association of SA Inc, in conjunction with the Office of the Technical Regulator will be holding our 2016 Plumbing & Gas Roadshow between February and June in various locations around South Australia. It is highly recommended that Plumbers and Gasfitters, Builders, Council Officers, Plumbing & Building Consultants, Architects and Plumbing Suppliers attend these sessions.

Day	Date	Time	Location	Venue
Wednesday	24th February	5.00pm - 7.00pm	Mount Gambier	Quality Inn Presidential Motel
Tuesday	8th March	5.30pm - 7.30pm	Port Lincoln	Hilton Motel
Thursday	10th March	5.30pm - 7.30pm	Port Pirie	John Pirie Motor Inn
Tuesday	5th April	5.30pm - 7.30pm	Seaford	The Beach Hotel Seaford
Thursday	7th April	5.30pm - 7.30pm	Victor Harbor	The Anchorage Victor Harbor
Tuesday	3rd May	5.30pm - 7.30pm	Gawler	Gawler Arms Hotel
Thursday	5th May	5.30pm - 7.30pm	Clare	Clare Country Club
Tuesday	10th May	5.30pm - 7.30pm	Murray Bridge	Murray Bridge Community Club
Tuesday	17th May	5.30pm - 7.30pm	Berri	Berri Resort Hotel
Tuesday	31st May	5.30pm - 7.30pm	Moonta Bay	Seagate Moonta Bay
Tuesday	7th June	5.30pm - 7.30pm	Thebarton	Master Plumbers Association
Wednesday	15th June	5.30pm - 7.30pm	Thebarton	Master Plumbers Association

Each session will be tailored to suit attendees following Regulation Roundup survey results

PLUMBING

- Plumbing Code of Australia and Standards Update
- New internal drainage plan web based - system 24/7 access for plumbers
- Electronic lodgement of Certificates of Compliance
- Venting requirements for trade waste installations
- Non drinking water and fire service update
- Bedding drains
- Connecting baths, bidets, wall hung urinals, dental units and wok burners
- Drainage requirements for multi-unit development sites
- Overflow relief guides

GAS

- Inspections and work on catering vehicles / events
- Caravan park audit feedback
- Appliances at height

\$25 MPA Members (with CITB funding)

\$35 Non Members (with CITB funding)

To apply for CITB funding, please visit
www.citb.org.au

**Light refreshments included*



REGISTER YOUR PLACES NOW

visit www.mpasa.com.au or call us on (08) 8292 4000



Financial Advice

Salary Sacrifice and Superannuation

As the national industry super fund for the construction, building and allied industries, Cbus is committed to helping you manage your employees' super payments and maximising their retirement outcomes. One of the key ways that your employees can give their super a boost is to make regular salary sacrifice contributions.

How does salary sacrifice work?

Salary sacrifice is an agreement made between an employer and an employee whereby the employer pays a set amount of before-tax salary into the employee's super account, so that their contributions can be taxed at a lower rate of 15%.

By making these extra contributions it can make a big difference to their super in years to come, where even small contributions can have the potential to make a significant difference to their lifestyle later on.

The government places limits on the amount which can be contributed to an employee's super each year, and therefore it is important for the employee to monitor the amount being contributed to their super fund.

To find out more about salary sacrifice and other ways employees can make additional contributions to their super, talk to our dedicated team of Cbus advisors on 1300 361 784, or visit www.cbussuper.com.au.

This information is about Cbus. It doesn't take into account your specific needs, so you should look at your own financial position, objectives and requirements before making any financial decisions.

Read the relevant Cbus Product Disclosure Statement to decide whether Cbus is right for you.

Contact 1300 361 784 or visit www.cbussuper.com.au for a copy.

Cbus' Trustee: United Super Pty Ltd ABN 46 006 261 623 AFSL 233792
Cbus ABN 75 493 363 262.



3 ways Cbus Super is building super futures for plumbers

1. Investing into new local construction projects boosting the pipeline of work for the plumbing industry
2. Having customer service and support available over the phone 8am-8pm AEST/ AEDT, Monday to Friday on **1300 361 784**
3. Easy administration for employers, with our easy to use SuperStream compliant system to pay your employees' super



1300 361 784



www.cbussuper.com.au



cbusenq@cbusmail.com.au

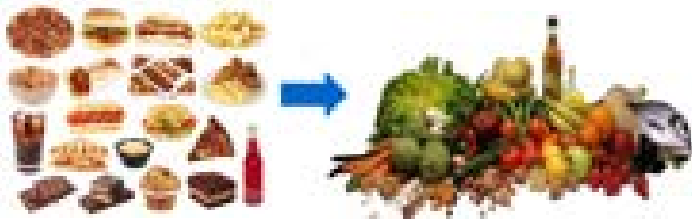


This information is about Cbus. It doesn't take into account your specific needs, so you should look at your own financial position, objectives and requirements before making any financial decisions. Read the relevant Cbus Product Disclosure Statement to decide whether Cbus is right for you. Contact **1300 361 784** or visit www.cbussuper.com.au for a copy.

Cbus' Trustee: United Super Pty Ltd ABN 46 006 261 623 AFSL 233792 Cbus ABN 75 493 363 262.

Nutrition Principles

Processed Vs Unprocessed - Why Should We Care?



Processed food is any food that has been altered from its normal & natural state. Most processed food will be packaged in a jar, can, bag or similar. It is basically any food that is not recognisable as its original state. We have boiled it down to these three things: *What is added, what is taken out & what is left.*

Added

There are a few reasons as to why ingredients are added to processed foods. Firstly, they are added to excite our taste buds. Sugar is one of the most commonly found ingredients in processed foods and this addictive substance can wreak havoc in our bodies. There are also artificial sweeteners, which are laboratory made chemicals, unrecognisable to the human body.

Secondly, we add other toxic chemicals, such as preservatives, colors, bleaches, flavors, emulsifiers and stabilizers. Our food is turning less and less into nutritious fuel, and more and more into a chemical sh*tstorm. Make yourself aware of exactly what is in your food. Check the ingredients.

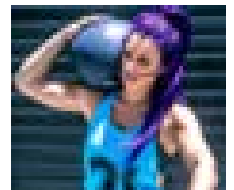
Taken

As food is processed, it has to go through many changes - heating, bleaching and chemically altering food is among some of the many stages of processed foods. These processes strip otherwise "healthy" food of things like fibre, and other essential vitamins & minerals. Food was designed by nature to include a spectrum of nutrients.

What's left

To be honest, there is not much left. Besides a whole heap of calories added from the sugars & other fillers, there is very little actual nutrition. Our bodies need vitamins and minerals to complete basic bodily functions and until we feed them to our bodies, we will stay hungry. Ever wondered why after a packet of chips you still feel like you could eat more? Our bodies get 0 nutrition and as a result, are still searching for food. Try eating the same amount, but in vegetables, and you'll notice your hunger levels are significantly less. It doesn't just have to be just vegetables, eat meat, fruit, nuts, seeds, (non vegetable) oils, honey, and anything else that is exactly as nature intended it.

Kayla Banfield - CrossFit Mode



SAPIPERELINING



- Custom Liners
- Junction / Bends
- L.I.T's

Call 1300 799 846

www.sapiperelining.com.au

▶ Watch our product info video online...



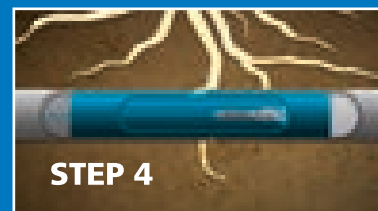
STEP 1



STEP 2



STEP 3



STEP 4

Smart Connect-
Feature
by Viega



Propress Smart Connect-Feature

The fastest and most reliable way
to locate any unpressed fitting!



For information call 1800 4 viega viega.com.au

Available from

Tradelink®

Quality and reliability you can stake your reputation on!

All Viega press fittings offer a unique safety feature – the Viega Smart Connect-Feature.

Thanks to this technology, which has been tried and tested millions of times, unpressed fittings automatically leak during the pressure test. Viega press fittings with Smart Connect-Feature work with both compressed air and water. If the connection has a leak, the “dry” leakage test will show a visible pressure decrease over the entire pressure range from 2.2 kPa to 300 kPa. If the leakage test is carried out with water, this visibly escapes from the unpressed fittings in the pressure range of 100 kPa to 650 kPa. Another advantage of the Viega press connection is the cylindrical pipe insertion. This prevents damage to the sealing element during the assembly process. Make the smart decision you can stake your reputation on. **Viega. A better idea!**

viega

Training

Are you aware of the extent of training being conducted by your association?



Above: Unley High School Skills Centre under construction

To its members, the MPA has offered and continues to promote a range of trade skills training in the form of short courses that enable members to upskill their product knowledge and gain licence endorsements. Courses are displayed on the MPA website. While revision of our existing training products are ongoing, your industry association is interested to investigate any particular training you may need. If you have any training queries or any course enquiries contact us at admin@mpasa.com.au

VET- SCHOOL BASED TRAINING

The MPA is currently in partnership with a number of metropolitan secondary schools to manage and deliver the CITB endorsed Certificate I in Construction qualification with a plumbing focus to interested year 11 and 12 students. The skills gained at this level are prime indicators for industry employability. The Certificate 1 in Construction (VET in Schools) comprises of an industry-endorsed set of learning strategies, career resources, and nationally accredited VET competencies and/or qualifications that can lead into apprenticeships, traineeships, further education or training, and direct employment. This secondary school vocational program also provides credit towards components of SACE.

SKILLS COVERED

The course gives a basic knowledge of and training in: health & safety policies and procedures; working effectively in the general construction industry; planning and organising work; conducting workplace communication; carrying out measurements and calculations; reading and interpreting plans and specifications; applying basic levelling procedures; handling construction materials; using hand and power tools; fabricating pressure piping; brazing copper using oxy-acetylene equipment; carrying out levelling and installing storm water drainage system.

STRUCTURED WORKPLACE LEARNING (SWPL)

Students are encouraged to undertake work placement as Structured Workplace Learning (SWPL) to complement their plumbing related studies. Work placement is programmed during school term breaks and our students look to school/community contacts and support from members of Master Plumbers Association of South Australia to gain this valuable, real life experience.

DOORWAYS TO CONSTRUCTION PLUMBING PLUS - (D2C)

On completion of the Certificate I in Construction qualification (with a plumbing focus), students can extend their industry knowledge and skills by entering the CITB Doorways to Construction (D2C) program. D2C comprises of an industry-endorsed set of learning strategies that include a selection of thirteen units taken from the Certificate III in Roof Plumbing. The D2C course provides more focused industry training as it covers basic welding, levelling and concreting skills, while practicing the accurate measuring, cutting and fitting a variety of roofing and plumbing products. Students are again encouraged to undertake work placement and structured workplace learning with a contractor during a term break.

SKILLS COVERED IN D2C

- Skills covered include:
- Welding using oxy acetylene equipment
- Cutting using oxy LPG acetylene equipment,
- Welding using manual metal arc welding equipment
- Levelling
- Simple concrete and rendering
- Welding polyethylene and polypropylene pipes using fusion method
- Fabricating and installing non-ferrous pressure piping
- Marking out materials
- Cutting and joining sheet metal
- Flash penetrations through roofs and walls
- Fabricating and installing roof drainage components
- Installing storm water and sub-soil drainage systems and carrying out WHS (Work Health Safety) requirements.

The MPA recognises that this level of VET training provides potential construction industry recruits with an operational awareness of plumbing industry requirements and allows both students and industry members to evaluate future employment options. Members wishing to provide on-site work experience for school students can register with MPA administration.

MPA currently have the below VET in schools programs with the below schools. If you are interested in more information in regards to these programs contact us on 8292 4000.

**Banksia Park International High School-
Certificate 1 in Construction**

**Hallett Cove R-12 School-
Certificate 1 in Construction
Doorways to Construction – Plumbing Plus**

**Paralowie R-12 School-
Certificate 1 in Construction**

**Seaton High School-
Doorways to Construction – Plumbing Plus**

**Unley High School-
Doorways to Construction – Plumbing Plus
Certificate 1 in Construction**

APPRENTICES

RECENTLY COMMENCED

Khye Bailey	Zac Logozzo
Dale Eshmade	Jordan Ljubicic
Tom Foster	Scott Price

RECENTLY COMPLETED

Matt Hoge
Stephen Holloway

Strength, Ethics, Integrity

The Master Plumbers Association Group Training Scheme would like to sincerely thank and acknowledge our past and present hosts for their outstanding contribution to the industry and the apprentices they have assisted to commence their careers.

Your ongoing and continued support is appreciated.

A & E Salt, AJ Paternoster, ABS Plumbing Services, **AS Carlson & Son**, ASR Plumbing, **Accurate Plumbing & Gas**, Adams & Co, **Advanced Commercial Plumbing**, Adelaide Quality Plumbing, **Axeman Plumbing**, Advanced Plumbing & Gas, Andrew Evans Plumbing, **Adelaide Plumbing & Civil**, Aquaboss Pty Ltd, **AG Plumbing Services**, Aroona Plumbing Services, Australian Construction Plumbing, **FJ Roberts & Son**, B & S Centofanti, **Bowley Plumbing**, BE & PE Jones, BT & RD Foreman, Baxter & Son, **Butterfields Services SA**, Benzie Plumbing & Gas, Cooke & Dowsett, Carmen Heating & Cooling, C & AA Plumbers **Commercial Plumbing**, CDC Investment Group, Castellan Plumbing Service, Competitive Plumbing, D Burns Plumbing & Gas, D & K Dalton, **Dalla Santa Plumbing**, DR Plumbing Services, **D'Ettorre Plumbing**, Damon McDonald Plumbing Service, DJ & GF Noble Plumbers, **Dominion Homes Australasia Pty Ltd**, Dale Wilson Plumbing, Diverse Civil & Commercial Projects, Doherty Plumbing, **Environ Group**, EJ Northway, Eco Plus Pty Ltd, Elliott Benson Plumbing & Gas, Entire Plumbing, Fire Cat SA, **Fleurieu Plumbing & Gas**, Flowfix Plumbing & Gas, Fullarton Plumbing, GMC Plumbing Service, Goodman Plumbing & Property Maintenance, **Hall & Baum**, H20 Plumbing, HR & RA Gurney, Haden Engineering, Hartmann Plumbing, Hartung Plumbing, **Hindmarsh Plumbing**, Hurst Plumbers, Hannam Plumbing Service, **Intelligent Plumbing**, Industrial Plumbing, Service, Industrial Medical Piping Systems, **J Adams Plumbing & Gas**, JR Plumbing North, **JNH Plumbing & Gas**, JRK Plumbing Service, **Heenan Plumbing Services**, Jaypee Plumbing, **John Burford Plumbing**, **Jordan Plumbing**, Joe Nemeth Plumbing, Key Plumbing, **Lane Plumbing Services**, Liddle Plumbing & Gas, Lenswood Gas Centre, Lowes Gas Solutions,

We Thank You.

Lindsay Rogers Plumbing, MTB Plumbing & Gas, Maesbury Plumbers, Metropolitan Plumbing & Gas, ME Pratt Excavations, Mainline Plumbing, **M & K Plumbing Services**, MPS Plumbing & Gasfitting, Marcus Priem Plumbing, Mark Webb Plumbing, Mundy Commercial Plumbing, Myponga Plumbing, **Nagle Plumbing & Mechanical**, Nathan Squires Plumbing, New Heights Plumbing, Next Gen Plumbers, Northern Plumbing Maintenance, **Mason Plumbing**, P & KA Foulds, PA Plumbers, **P & N Plumbing**, PJ & DC Morgan, **PA & CI Martin**, Persico Plumbing & Construction, **Paul Lovegrove Pty Ltd**, Plumfast Pty Ltd, Precise Plumbing, Premier Plumbing, **Laser Plumbing Kilkenny**, Peter Johnson, **Plumbing & Pipeline Solutions**, Puckett Plumbing, **Primary Plumbing**, Rice Plumbing (Laser Plumbing Buckland Park), **Remarkable Plumbing**, RS Burbidge, Rendell Plumbing, **RJS Plumbing**, Rodney Waltrovitz Plumbing, **Resolve Plumbing**, Rolton & Hibbird, OConnor Plumbing Service, **Plumb It & Gas It**, Sam Dunn Plumbing, Seaview Plumbing, **Select 1 Plumbing**, Seaside Plumbing, **Smith Brothers Plumbing**, Shane Steven Plumbing, SA Hot Water Plumbing, So Green Plumbing, Sheffield Plumbing, Steve Golat Plumbing, **Supreme Plumbing & Gas**, Smolenaars Pty Ltd (Laser Plumbing Salisbury), Statewide Pool Services, Stephen Dawber Plumbing, Swift Plumbing, Syfon Systems Pty Ltd, The Gas Guy, **Tadpole Plumbing**, TE & R Finlay Nominees (Laser Plumbing Seaford), **Total Hot Water & Plumbing**, Taurus Plumbing, Tech20 – Applied Industries Pty Ltd, Tobin Plumbing Service, Tom the Tapman, Traeger Plumbing Services, **Tyron Press Master Plumber**, Tomkinson Plumbing & Drainage, Trueflow Plumbing, **WF Gray & Co**, WC Plumbing Services, Wallace Plumbing, Water Filtration (SA Plumbing & Hot Water), Woodsys Plumbing, Watson Plumbing, Westside Plumbing, **Yates Plumbing**.

To secure a quality Master Plumbers Association apprentice or to become a Host employer, please contact us on 08 8292 4000 or to our Field Officers directly, Marilyn Sheffield (South) 0488 909 185 or Steve Prisk (North) 0499 975 475. Email – apprentice@mpasa.com.au

New Members



Riverland Plumbing

Riverland Plumbing & Gas founded by James & Sarah Kloeden in 2012, began as a small venture which has since expanded to include 5 plumbers who perform domestic, commercial & industrial work all over the Riverland & Murray Mallee areas.

Ph: 0422 752 474



Jack's Plumbing & Gas is your local Adelaide Hills plumber here to help you! Jack is a Master Plumber & Gas Fitter and can help you with what you need. With over 12 years' experience, he is honest and has very competitive rates so please call for a free quote with what you require.

Ph: 0410 061 407



Think Career, Think PEER



Host a Work Experience Student Today!

PEER is currently running a Certificate II in Construction* targeted to the Plumbing Industry

Work experience is part of this course

We now have students ready for work experience

Call Training Services: 8348 1200

**Funded by WorkReady Jobs First STL Program*

PEER Ensures:

Quality talented apprentices

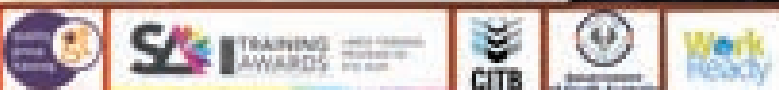
Apprentices equipped with tools, uniform and PPE

No lock in contracts

An easy affordable solution

Dedicated and enthusiastic apprentices

Email: colin@peer.com.au



www.peer.com.au | mail@peer.com.au | 8348 1200

NEW

CONTINUOUS FLOW JUST GOT A LOT BETTER!

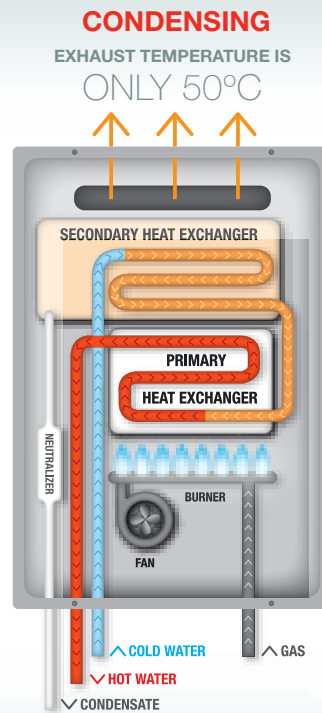
Dux Condensing Continuous Flow



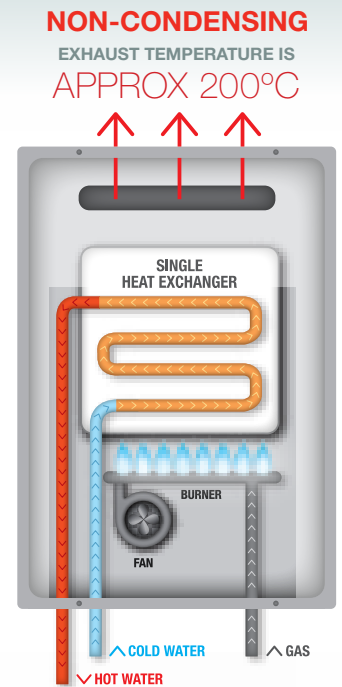
The next generation in continuous flow

- Next generation delivers over \$1000* in savings over the 12 year warranted heat exchanger life
- Captures and re-uses circa 150°C of exhaust heat normally wasted, which delivers big energy savings and reduces emissions
- Providing Australian homes with superior technology straight from Noritz, Japan's leading manufacturer of household water heaters
- Features superior condensing technology that boasts over 90% thermal efficiency by capturing additional heat in the secondary heat exchanger
- Compact size and light-weight like traditional continuous flow models
- Inbuilt neutralised condensate tank

*Running cost savings compared to a 5 star natural gas storage water heater over the 12 year warranty of the heat exchanger.
 †12 year warranty on heat exchangers including 3 years full parts and labour.



(Condensing technology)
Thermal efficiency = 90-96%



(Conventional technology)
Thermal efficiency = 80-84%



Hot Products



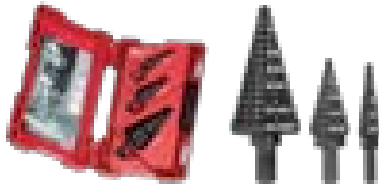
RIDGID® MR-10 Magnetic Locator

- Quickly locate buried iron or steel objects such as: valve/curb boxes, manhole covers, cast iron pipes, steel enclosures, well casings, reinforced septic tanks, survey pins
- Ergonomic rugged design includes carrying case and batteries
- Highly sensitive instrument with audio and visual feedback
- AutoNull feature blocks out nearby metallic interference such as an automobile or chain link fences.

For more information go to www.rigid.com.au

Milwaukee

Designed with JAM-FREE Performance for tough jobsite conditions, these Step Bits boast a smooth cutting Dual Flute Design with black oxide coating, producing greater cutting speed, less heat and extending bit life. Milwaukee has also identified common problems posed by bit walking and developed a new design aptly named Rapid Strike™ Tip to combat this, ultimately saving time and promoting greater user productivity. For added user convenience, Milwaukee has integrated laser engraved reference marks with each bit in turn making it easier for the user to stop drilling based on the size required. The new bits also feature a 3-flat Secure-Grip™ shank, ensuring a solid connection with the drill chuck, less slippage and increased user precision.



For more information on Milwaukee's full line of products, please visit milwaukeetools.com.au

Viega's Sanpress Inox: The non-rusting piping system

Viega's Sanpress Inox stainless steel system has been long regarded throughout Europe as the perfect drinking water system.

In Australia, with a trend towards stainless steel in multi-storey buildings as the main riser for the higher pressure rating of the pipe, the Sanpress Inox system provides an effective and efficient solution.



The focus is on safety, hygiene, ease of use, precision and durability.

For more information about Sanpress Inox go to www.viega.com.au

Tradelink

Kincrome Plumber's Tool Kit

The new 41-piece Plumber's Tool Kit is now available exclusively at Tradelink.

The Tool Kit features a heavy duty aluminium truck box filled with quality tools from Kincrome, including a 14-piece screwdriver set, multi-grips, tin snips, tape measure and copper tube benders – everything a plumber needs to get the job done.



Plus all Kincrome Tool Kits are covered by a FREE 12 Month Protection Plan.

For more info, visit tradelink.com.au or call 1800 PLUMBING

PRIORITY PLUMBING

- DIAGNOSTIC & GROUND MICROPHONES
- TRACER GAS DETECTION
- THERMAL IMAGING
- LEAK CORRELATION & DATA LOGGING
- CCTV INSPECTION & REPORTING
- PIPELINE LOCATION
- HYDROJET DRAIN CLEANING



We specialise in Non-Invasive, Non-Destructive Leak Location using specialised equipment for all Domestic & Commercial Pipework and Infrastructure.



Servicing and Assisting Plumbing Contractors



"The Leak Detection Specialist"

PO Box 664 Oaklands Park, SA 5046 Tel: 0414 825 692 Email: damien@priorityplumbing.com.au www.priorityplumbing.com.au

Running a small or large fleet?



Stillwell Ford
helping to
support and
grow the
Members
Business.

**Contact our professional Fleet Team
for friendly and helpful advice.**

Barb Schlaikier

barbaraschlaikier@stillwell.com.au

M: 0432 599 108

Russell Brealey

russellbrealey@stillwell.com.au

M: 0408 200 780



Stillwell Ford

No. 1 Main North Road, MEDINDIE PH 8269 9999

stillwellford.com.au



Quality endorsed apprentices on tap.

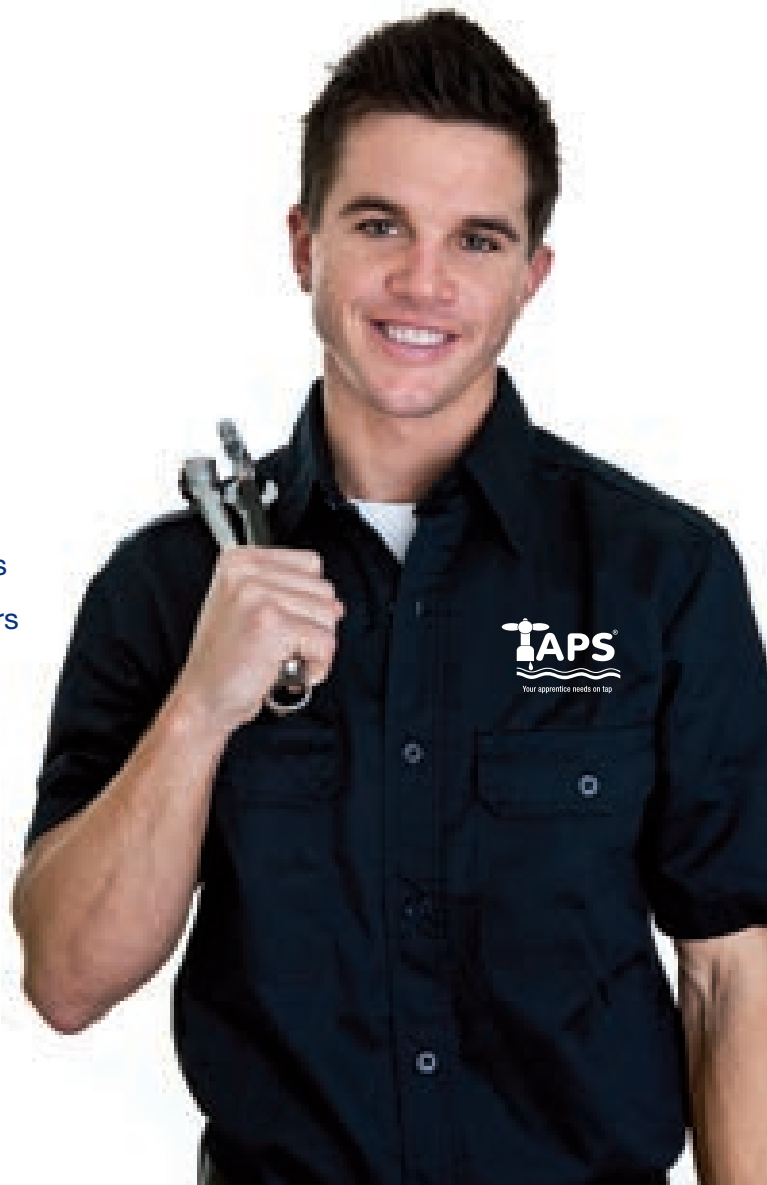
TAPS is committed to providing quality endorsed apprentices to the plumbing, roofing and gas fitting industries through superior training methods and employer support services.

We guarantee it!

- > We select the best candidates
- > Over 260 apprentices in the field
- > Over 100 active host employers
- > Not for profit organisation
- > Minimal paperwork
- > Flexibility
- > Ongoing support
- > Additional training
- > Hassle free process
- > 18 years of providing apprentices to the industry
- > Dedicated to exceeding industry safety standards
- > Apprentice placements for 1 week or up to 4 years

 (08) 8433 1200

 www.tapssa.com.au



Receiving CITB Funding Assistance



ISO 9001:2008
FS 520483

MPA EVENT CALENDAR 2016

MARCH

- Tuesday 8** Plumbing & Gas Roadshow
Hilton Motel, Port Lincoln
- Thursday 10** Plumbing & Gas Roadshow
John Pirie Motor Inn, Port Pirie
- Friday 11** World Plumbing Day Golf Day
- Tuesday 15** Industry Forum
Lockleys Hotel



APRIL

- Tuesday 5** Plumbing & Gas Roadshow
The Beach Hotel, Seaford
- Thursday 7** Plumbing & Gas Roadshow
The Anchorage, Victor Harbor
- Tuesday 20** Industry Forum
Robin Hood Hotel

MAY

- Tuesday 3** Plumbing & Gas Roadshow
Gawler Arms Hotel
- Thursday 5** Plumbing & Gas Roadshow
Clare Country Club
- Tuesday 10** Plumbing & Gas Roadshow
Murray Bridge Community Club
- Tuesday 17** Plumbing & Gas Roadshow
Berri Resort Hotel
- Tuesday 24** Industry Forum
Woodcroft Tavern
- Tuesday 31** Plumbing & Gas Roadshow
Seagate Motel, Moonta

JUNE

- Tuesday 7** Plumbing & Gas Roadshow
Master Plumbers Association, Thebarton
- Wednesday 15** Plumbing & Gas Roadshow
Master Plumbers Association, Thebarton

JULY

- Tuesday 26** Industry Forum
Highbury Hotel

AUGUST

- Tuesday 23** Industry Forum
Lockleys Hotel

SEPTEMBER

- Tuesday 20** Industry Forum
Robin Hood Hotel

OCTOBER

- Friday 18** AGM, Thebarton
- Friday 19** Industry Forum
Woodcroft Tavern
- Friday 28** President's Lunch



NOVEMBER

- Friday 11** Remembrance Day

DECEMBER

- Sunday 25** Christmas Day

OUR INDUSTRY SUPPORTERS



Master Plumbers
SOUTH AUSTRALIA

Sponsorship of Master Plumbers makes it possible for us to add significant value to the service we provide to our members. We wish to express our sincere appreciation to our 2016 Branch Sponsors for their generous support.

Please support them by purchasing their goods or services.



For further details on our industry partnership deals or products,
contact MPA on 8292 4000 or admin@mpasa.com.au
www.mpsa.com.au

Industry Members

Architectural Water Solutions
Arthur J Gallagher
AsBuilt Technical Services
Billi Pty Ltd
BioCycle - Jowa Group Pty Ltd
Blucher (Aust) Pty Ltd
Chromagen Australia Pty Ltd
Con-Serv Corporation (Australia) Pty Ltd
Cooke Precast Concrete Pty Ltd
Crane Enfield Metals Pty Ltd
Crystal Clear Purification Systems
3M Purification
Davey Water Products
Dial Before You Dig SA/NT Inc
Dux Manufacturing
Ecovortek Pty Ltd
Eco Building Supplies
Electrolux Home Appliances
Envestra Ltd
Enware Australia Pty Ltd
FilterWorks
Galvin Engineering
Gramall Hot Water Systems
GWA Bathrooms & Kitchens
HD Pumps
Harsmith Building Products
Heaven Fresh Australia
In-Sink-Erator
Iplex Pipelines
Johns Statewide Collections Pty Ltd
LWG Zurn Australia Pty Ltd (SA)
Milwaukee Power Tools
Northern's Plumbing Supplies
PEER Training
Pentair Water Australia
Perks
Philmac Pty Ltd
Quantum Energy Technologies
Rain Harvesting Pty Ltd
Reece Pty Ltd
Rehau Pty Ltd
Reliance Manufacturing Company
Rheem Australia Pty Ltd
Ri-Industries
Ridge Tool (Aust) Pty Ltd
Rinnai Australia Pty Ltd
Robert Bosch (Australia) Pty Ltd
Samios Plumbing Supplies
Saniflo (Australasia) Pty Ltd
Spotless Facilities and Asset Management
Stiebel Eltron (Australia) Pty Ltd
Storm Plastics (SA) Pty Ltd
Straight Through Insurance
Studor Australia
TAFE (Tonsley Campus)
TAPS
The South Australian Water Corporation
Tradelink Plumbing Supplies
Training Prospects
Viega Pty Ltd
VTM Valves
WFI Ltd
Wireless Communications
Zip Heaters Aust Pty Ltd

Executive & Staff



Master Plumbers

SOUTH AUSTRALIA

PRESIDENT: Rob Pavan
CDC Plumbing & Drainage
Phone: 8373 0335
Email: robert.pavan@cdcplumbing.com

DEPUTY PRESIDENT: David Hurst
Smith Brothers Plumbing
Phone: 8234 5000
Email: dhurst@smithbrothers.com.au

INDEPENDENT CHAIR: Natasha Hemmerling
Clarke Hemmerling Lawyers
Phone: 0417 806 217
Email: natasha@clarkehemmerling.com.au

TREASURER: Damon Hammond
Perks & Assoc.
Phone: 8273 9300
Email: dhammond@perks.com.au

COUNCILLORS:
Steve Adams *Intelligent Plumbing Services*
Phone: 8344 6104 Email: iplumbing@bigpond.com
Dale Anderton *Jordan Plumbing*
Phone: 8440 0400 Email: dale.anderton@rajordan.com.au

Rob Dineen *Dineen Plumbing*
Phone: 8234 9300 Email: admin@dineenplumbing.net.au

Louis Visintin *Butterfields Service (SA) Pty Ltd*
Phone: 8443 3600 Email: lvisintin@butterfields.com.au

MPA STAFF MEMBERS:

Andrew Clarke - Executive Officer *Marilyn Sheffield - Field Officer*
m: 0438 282 448 m: 0488 909 185
e: andrew.clarke@mpasa.com.au e: marilyn.sheffield@mpasa.com.au

Thina Mariappan *Steven Prisk - Field Officer*
Business Services/Compliance Coordinator
m: 0407 407 221 m: 0499 975 475
e: thina.mariappan@mpasa.com.au e: steven.prisk@mpasa.com.au

Crystal Balazs - Training Coordinator
e: crystal.balazs@mpasa.com.au

Frances McCaffer *Don Sims - Trainer*
Accounts & Payroll Officer
e: frances.mccaffer@mpasa.com.au m: 0407 407 446
e: don.sims@mpasa.com.au

Madison Ashby
Administration Officer
e: madison.ashby@mpasa.com.au

Greg Lyng - Group Training Manager
m: 0447 010 812
e: greg.lyng@mpasa.com.au



2016 PLUMBER CASH BACK

FOR LICENSED PLUMBERS ONLY



It's back!

GET UP TO
\$100
CASH BACK*
When you buy an eligible
Rheem Product

With the Rheem Cash Back on again in 2016 choosing a Rheem water heater isn't just great for your customer, it's great for your business. So install a Rheem today, and start claiming your cash back.

Promotional period runs from 1/03/16 to 31/07/16 for eligible purchases.
Claims close 12/08/16. To enter scan the QR code or visit
www.rheem.com.au/plumbercashback

*Terms and conditions apply: Plumbers must purchase between the promotional period 1st March 2016 - 31st July 2016 from a participating merchant/reseller and submit their claim/s by 12th August 2016. Cash back paid via EFT. Not available as point of sale discount, claims must be lodged at www.rheem.com.au/plumbercashback. The Category A Participating Products for the \$50 Cash Back are: • Rheem 125L & 160L electric water heaters (Model No. 191125, 191160, 192160); • RheemPlus 125L & 160L electric water heaters (Model No. 121125, 121160); • Rheem Stellar Stainless Steel 50L, 80L electric water heaters (Model No. 4A1050, 4A1080); • Rheem 4 Star 135L & 170L gas water heaters (Model No. 347135, 347170); and • Rheem 6 Star 12L/min, 16L/min, 20L/min Continuous Flow gas water heaters (Model No. 874612, 876612, 874E16, 876E16, 874620, 876620). Category B Participating Products for the \$100 Cash Back are: • Rheem 250L, 315L & 400L electric water heaters (Model No. 491250, 492250, 491315, 492315, 491400, 492400); • RheemPlus 250L & 315L electric water heaters (Model No. 121250, 121315); • Rheem Stellar Stainless Steel 125L, 160L, 250L, 315L electric water heaters (Model No. 4A1125, 4A1160, 4A1250, 4A2250, 4A1315, 4A2315); • Rheem Stellar 5 Star 330 & 360 vitreous enamel gas water heaters (Model No. 850330 & 850360); • Rheem Stellar Stainless Steel 5 Star 330 gas water heaters (Model No. 8A0330); and • Rheem 6 Star 27L/min Continuous Flow gas water heaters (Model No. 864627, 866627, 874627, 876627).



COMES ON STEADY, HOT AND STRONG

INSTALL A

